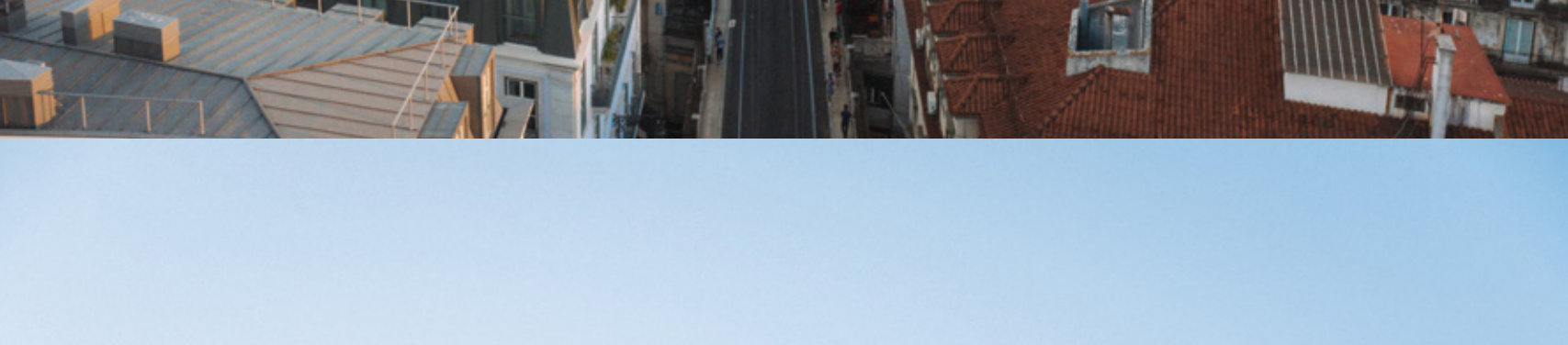




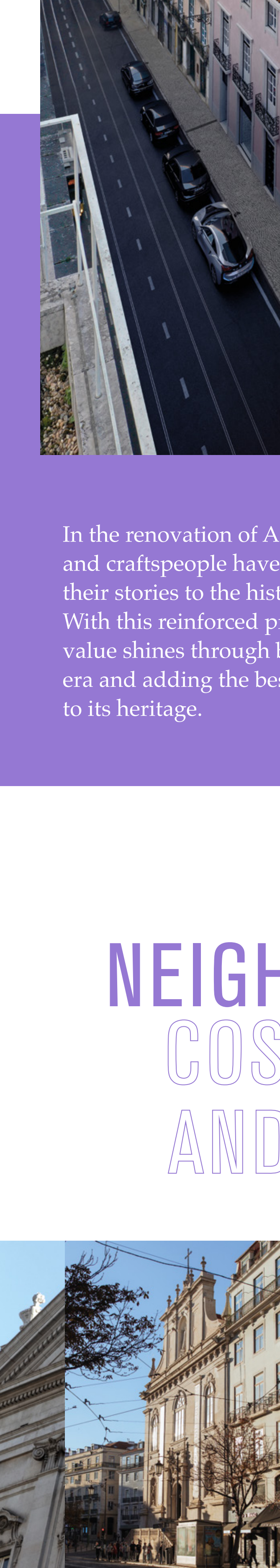
Alecrim 51

The view of the River Tagus from the Rua do Alecrim is one of the most striking in Lisbon's imagery.



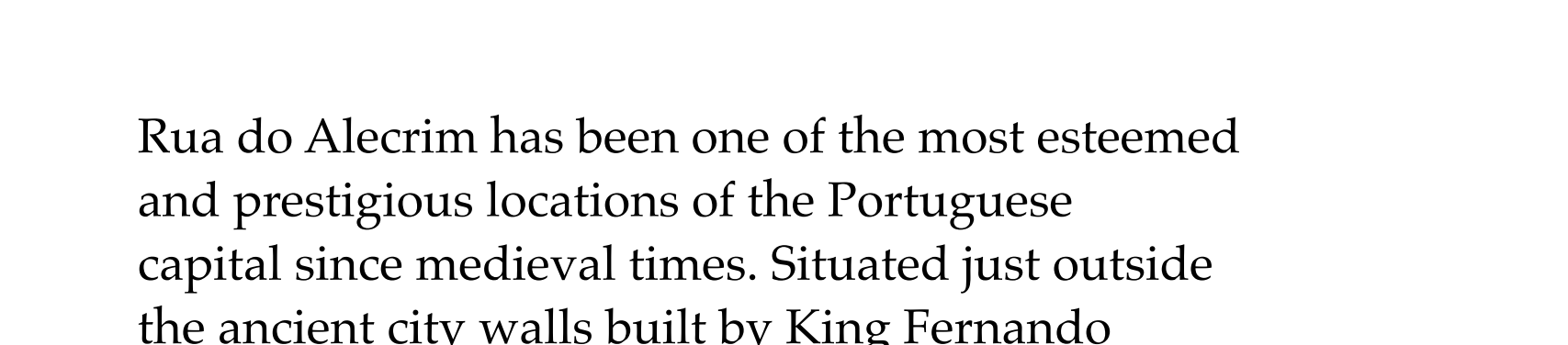
On Rua do Alecrim, one of the best-known streets of Lisbon's old quarter, leading straight into the heart of the city, a stately 18th century building with river views has been turned into a 21st century artwork and urban haven.

Alecrim 51 is an invitation to an exceptional experience of comfort and style and an affirmation of modernity that enhances an enriching history and an iconic location. With its selection of unique designer residences that adapt to all styles of urban life, Alecrim 51 is a rare and enticing offering for those with discerning taste.



"The future is crafted from the past."

Isabel Pereira, Architect – Fragmentos



In the renovation of Alecrim 51, artists and craftspeople have worked to contribute their stories to the history of the building. With this reinforced protagonism, the property's value shines through by adapting to a new era and adding the best of the present day to its heritage.

THE NEIGHBOURHOOD COSMOPOLITAN AND BOHEMIAN



Rua do Alecrim has been one of the most esteemed and prestigious locations of the Portuguese capital since medieval times. Situated just outside the ancient city walls built by King Fernando in the 14th century, it was one of the main thoroughfares leading into Lisbon.

With the arrival of modern times, the aristocratic estates and palaces were edged out by bourgeois housing and fashionable establishments.

The neighbourhood became the focal point of artistic debates and the headquarters of successive cultural movements that swept through Lisbon. Along the Rua do Alecrim strolled the generations of Almeida Garrett, Eça de Queiroz and Fernando Pessoa - writers who gave this street life and immortalised it on paper.

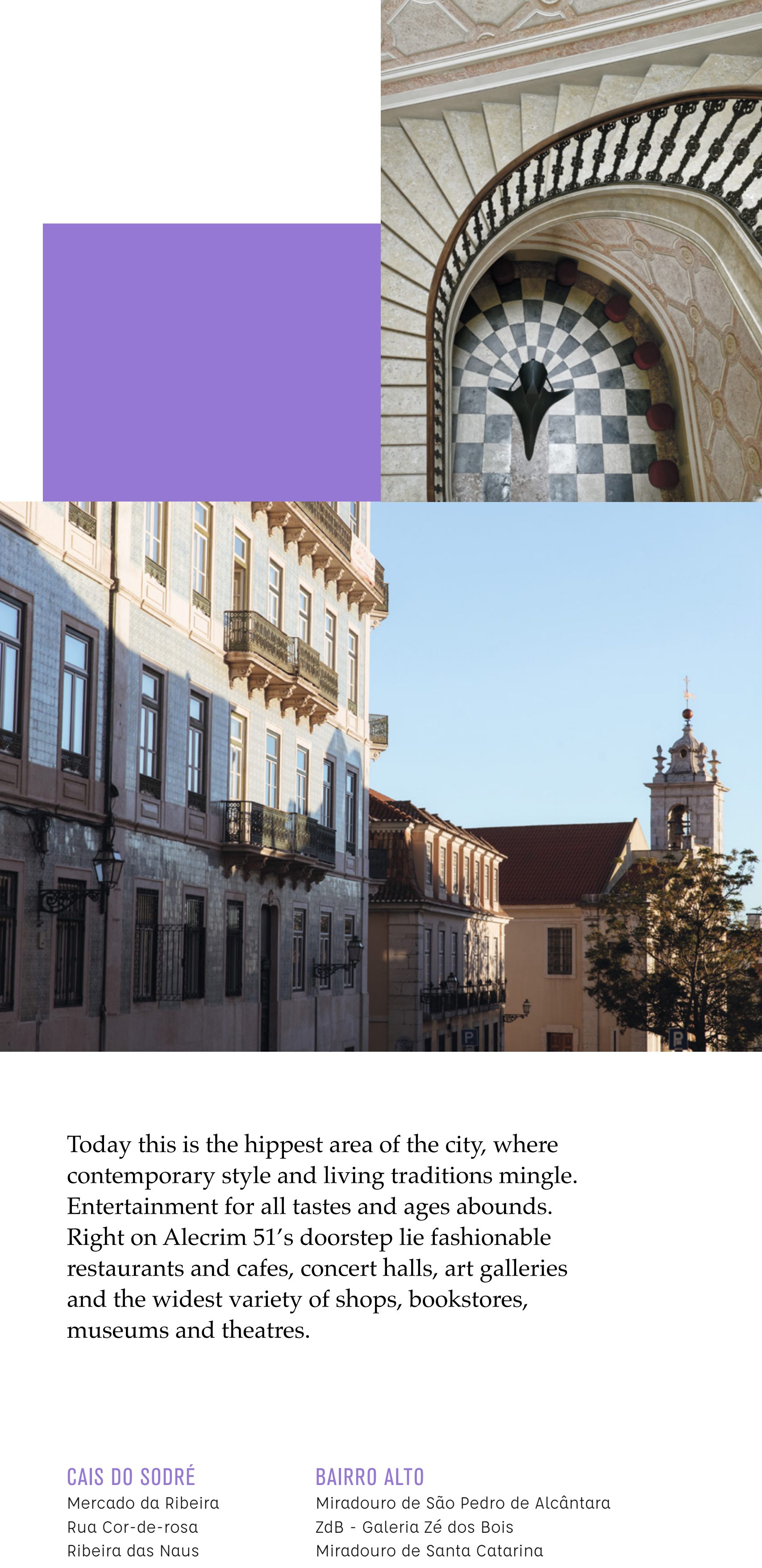


Rua do Alecrim lies at the crossroads of Lisbon's most cosmopolitan districts, at the apex of the city's cultural, commercial and political life.

It is the nexus linking Bairro Alto and the Chiado to Cais do Sodré and the river. Modernist, homely and aristocratic in equal measure, it stands in an emblematic place, with an atmosphere impossible to recreate but eternally rediscovered on each of the innumerable walks it offers.

HIGHLIGHTS





Today this is the hippest area of the city, where contemporary style and living traditions mingle. Entertainment for all tastes and ages abounds. Right on Alecrim 51's doorstep lie fashionable restaurants and cafes, concert halls, art galleries and the widest variety of shops, bookstores, museums and theatres.

CAIS DO SODRÉ

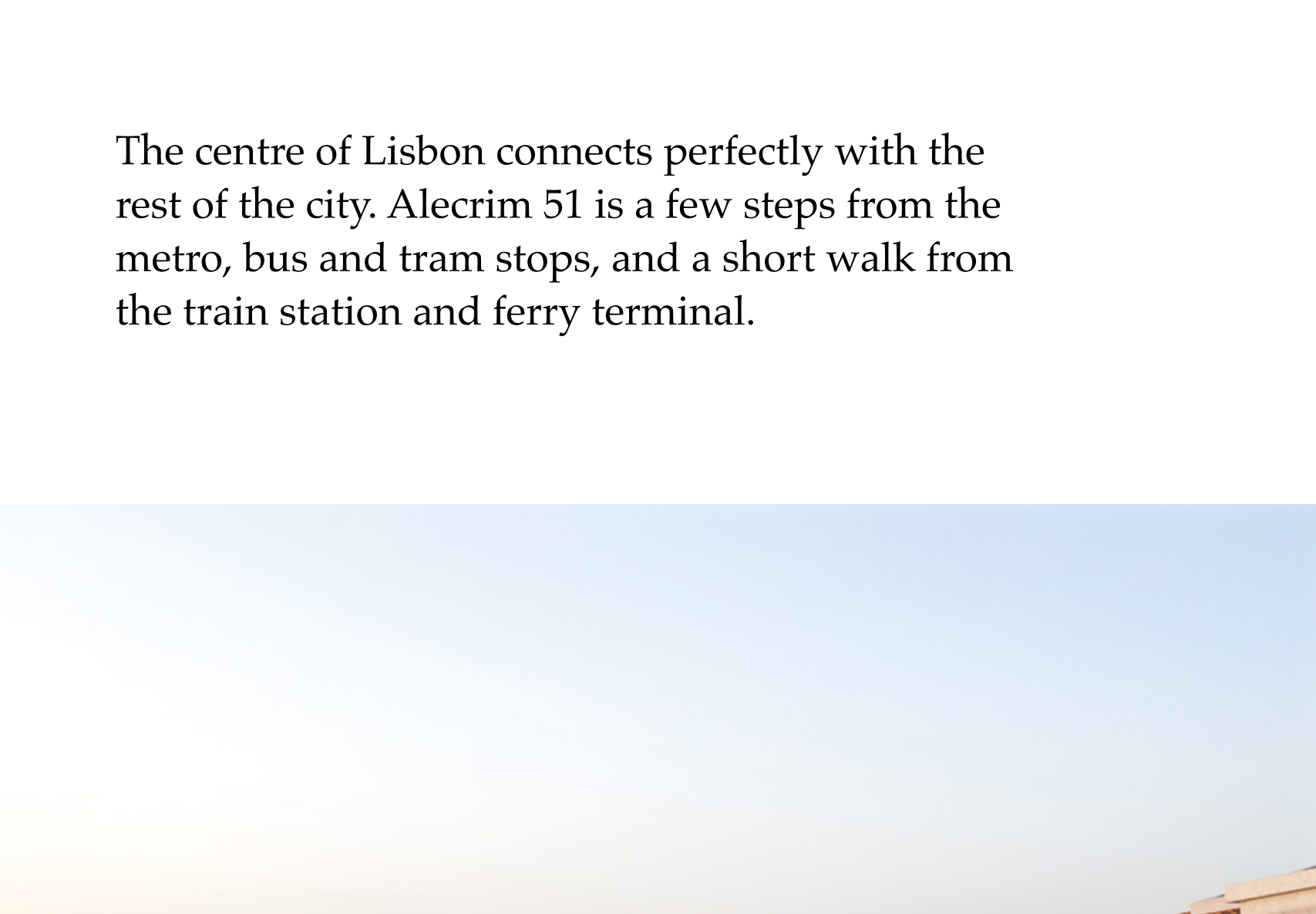
Mercado da Ribeira
Rua Cor-de-rosa
Ribeira das Naus

BAIRRO ALTO

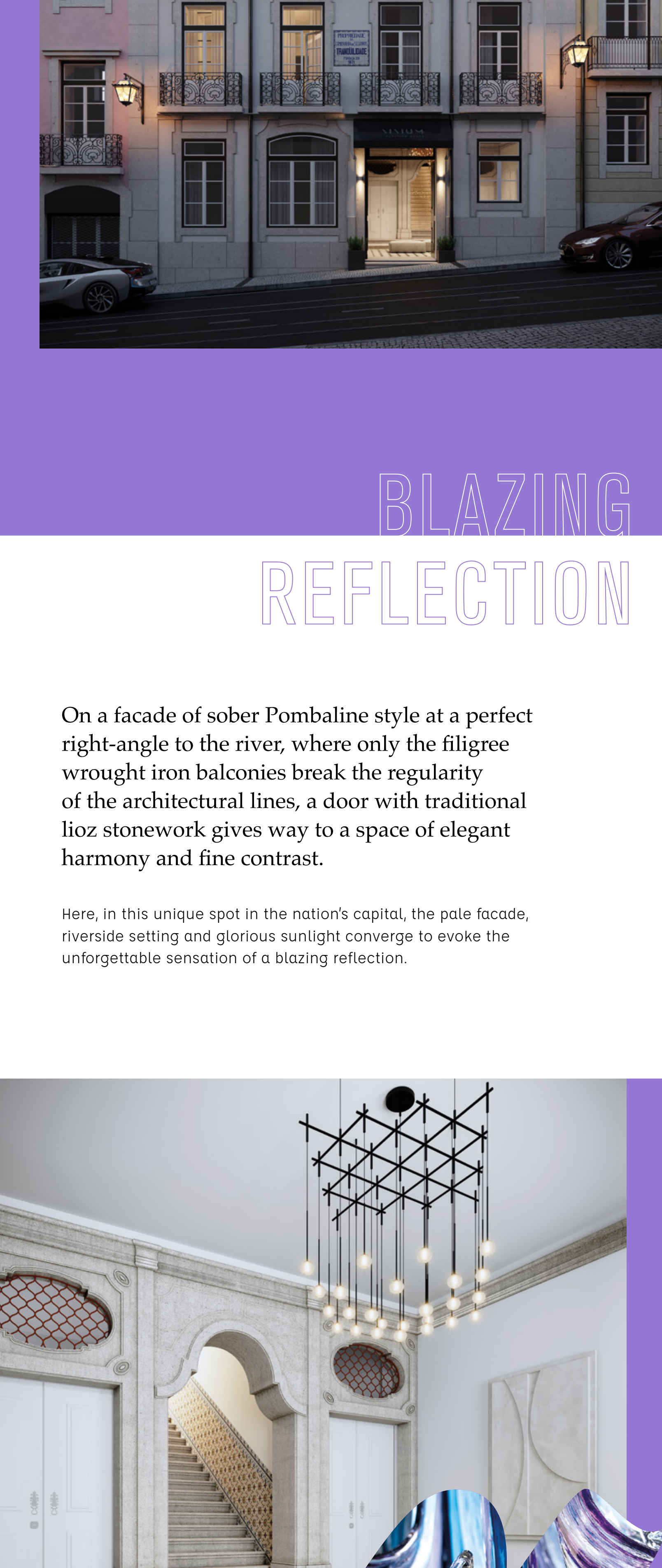
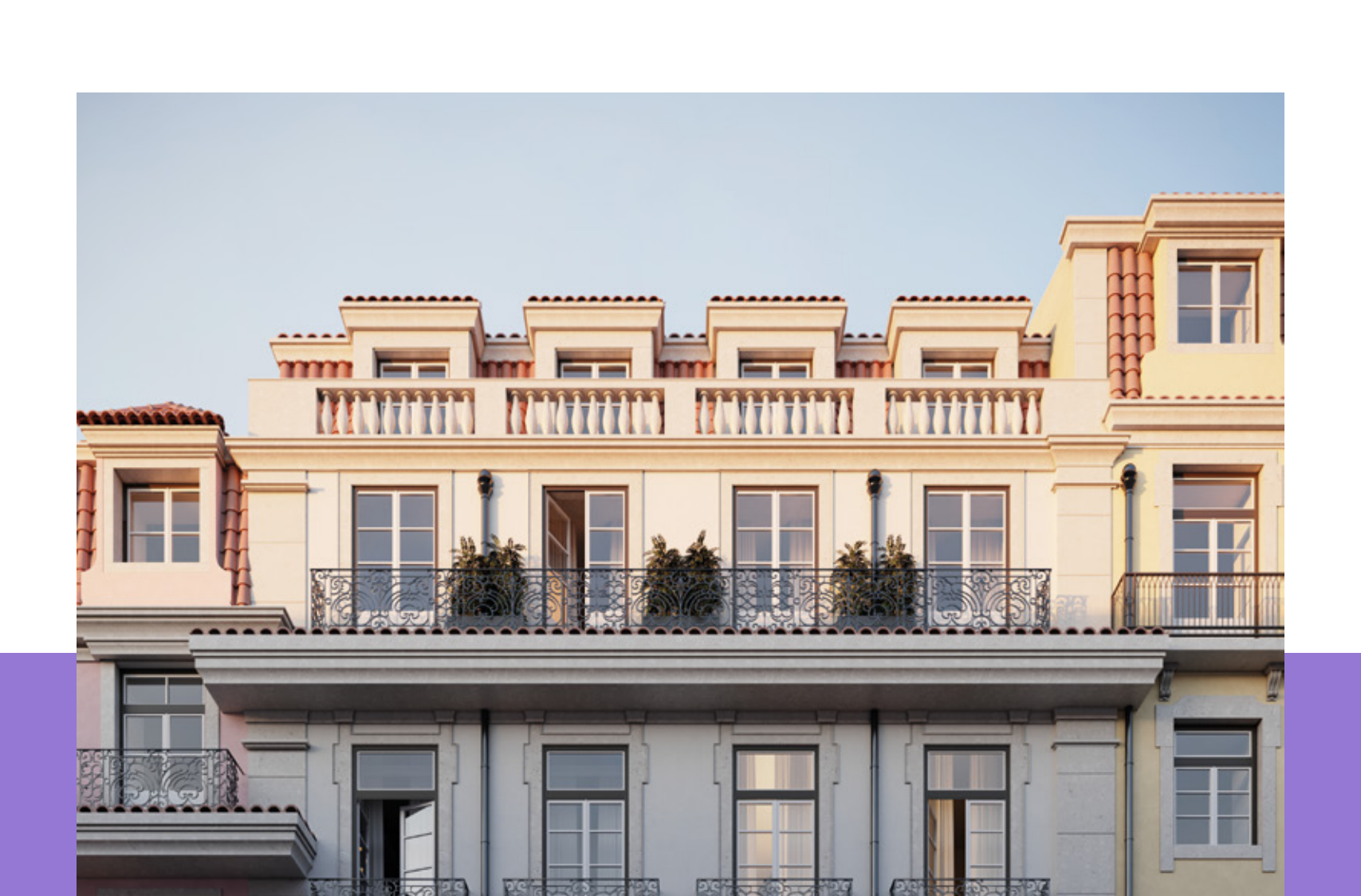
Miradouro de São Pedro de Alcântara
ZdB - Galeria Zé dos Bois
Miradouro de Santa Catarina
Elevador da Bica

CHIADO

Café Brasileira
Teatro São Carlos
Teatro São Luiz
Museu Nacional de Arte Contemporânea do Chiado
Brotéria
Armazéns do Chiado



The centre of Lisbon connects perfectly with the rest of the city. Alecrim 51 is a few steps from the metro, bus and tram stops, and a short walk from the train station and ferry terminal.



BLAZING REFLECTION

On a facade of sober Pombaline style at a perfect right-angle to the river, where only the filigree wrought iron balconies break the regularity of the architectural lines, a door with traditional lioz stonework gives way to a space of elegant harmony and fine contrast.

Here, in this unique spot in the nation's capital, the pale facade, riverside setting and glorious sunlight converge to evoke the unforgettable sensation of a blazing reflection.



THE LOBBY

A STYLISH CLASSIC

The lobby of Alecrim 51 expresses the building's identity in a contemporary language. It is a refined but welcoming area that offers a precise combination of luxury and discretion with a suitably artistic gesture.

The intervention of architects and artists highlights the transformative power of this transitional space. The theme of the art is transcendence and metaphor, the synthesis of past and future in a present that becomes timeless as time stands still.

Art exists solely to be experienced.



APARTMENTS

A DESIGNER PROPOSAL

Alecrim 51 offers 15 residential spaces spread over five floors, with an elevator and views onto Rua do Alecrim or Rua das Flores. There are 14 apartments in different formats and an impressive loft with its own street access named ARCHOS, a versatile space of high vaulted ceilings and columns.



The apartments have been styled around the renovation of the property and offer a variety of choices. Alecrim 51 is about perfectly-honed living spaces and homes just waiting to be experienced.

STUDIO APARTMENTS

Five studio apartments skilfully use their 40sqm to its full potential, taking advantage of high ceilings and large windows to make welcoming, adaptable and elegant spaces.

The two-bedroom office apartment on the first floor offers access to an exclusive patio - an outdoor retreat for relaxing and entertaining that features a vertical garden ascending to imbue the whole building with a placid ambience.

ONE-BEDROOM LARGE APARTMENTS

Four one-bedroom large apartments, with over 90sqm each, provide bright living rooms served by separate kitchens and luxurious en-suite bedrooms, with walk-in wardrobes and well-furnished bathrooms.

CANOPY

The top floors are taken up by an original three-bedroom, two-story apartment called Canopy, with a total floor space of over 165sqm, mansard ceilings and bright dormer windows.

Canopy offers a different experience of Lisbon's rooftops over the Tagus. A romantic en-suite master bedroom with access to a pleasant winter garden completely occupies the attic.

TWO-BEDROOM OFFICE APARTMENTS

Four two-bedroom office apartments, with 122sqm or 83sqm, feature two en-suite bedrooms and a spacious living room with open-plan kitchen.



INTERIORS

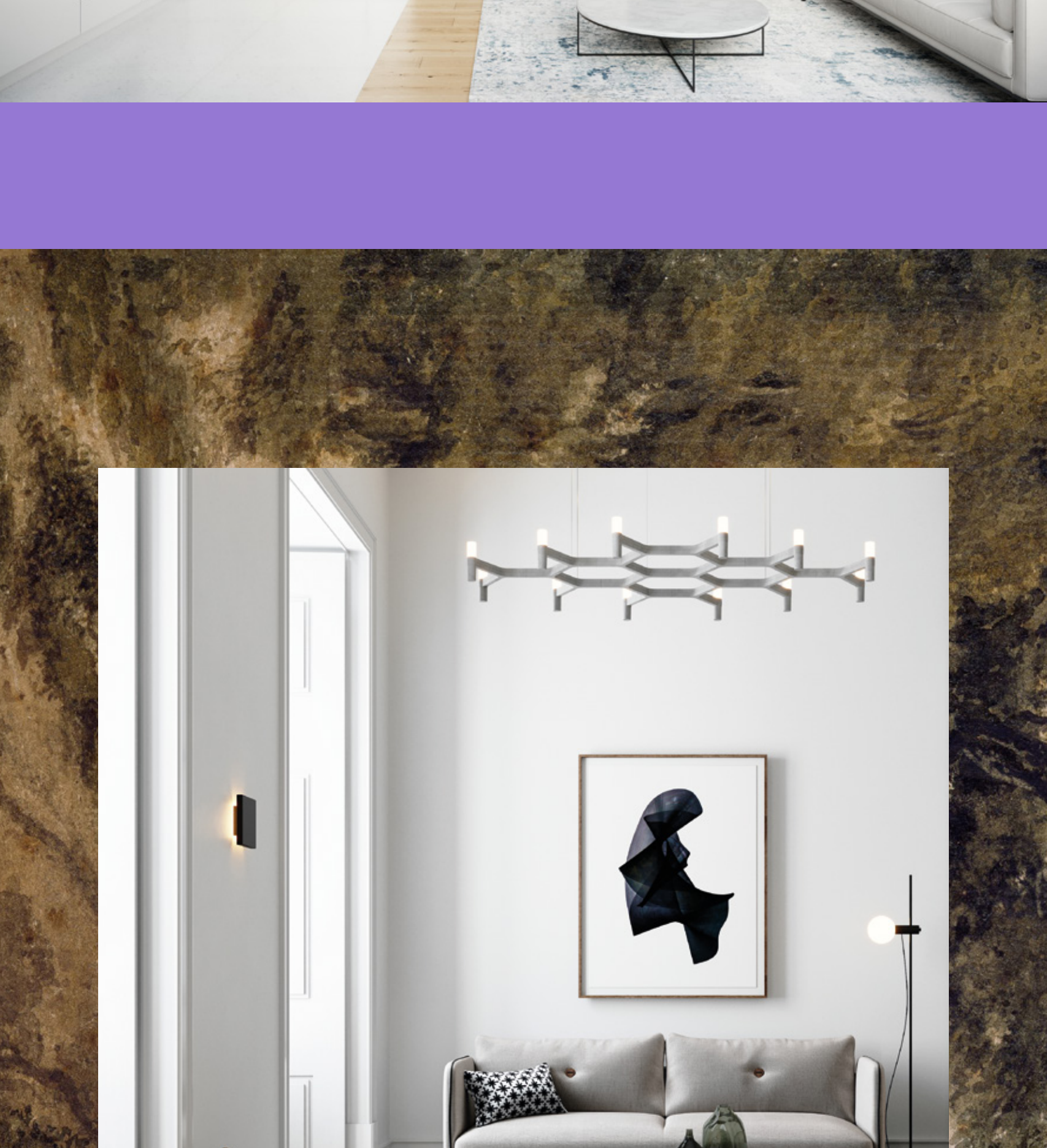
HERITAGE MEETS FASHION

Each apartment has its own character and is given an individual makeover, blending restored elements with a modern and functional design.



The features that tell the story of the building and evoke its enriching past were carefully recovered and set among beautiful things, created with a strong sense of harmony in every detail.

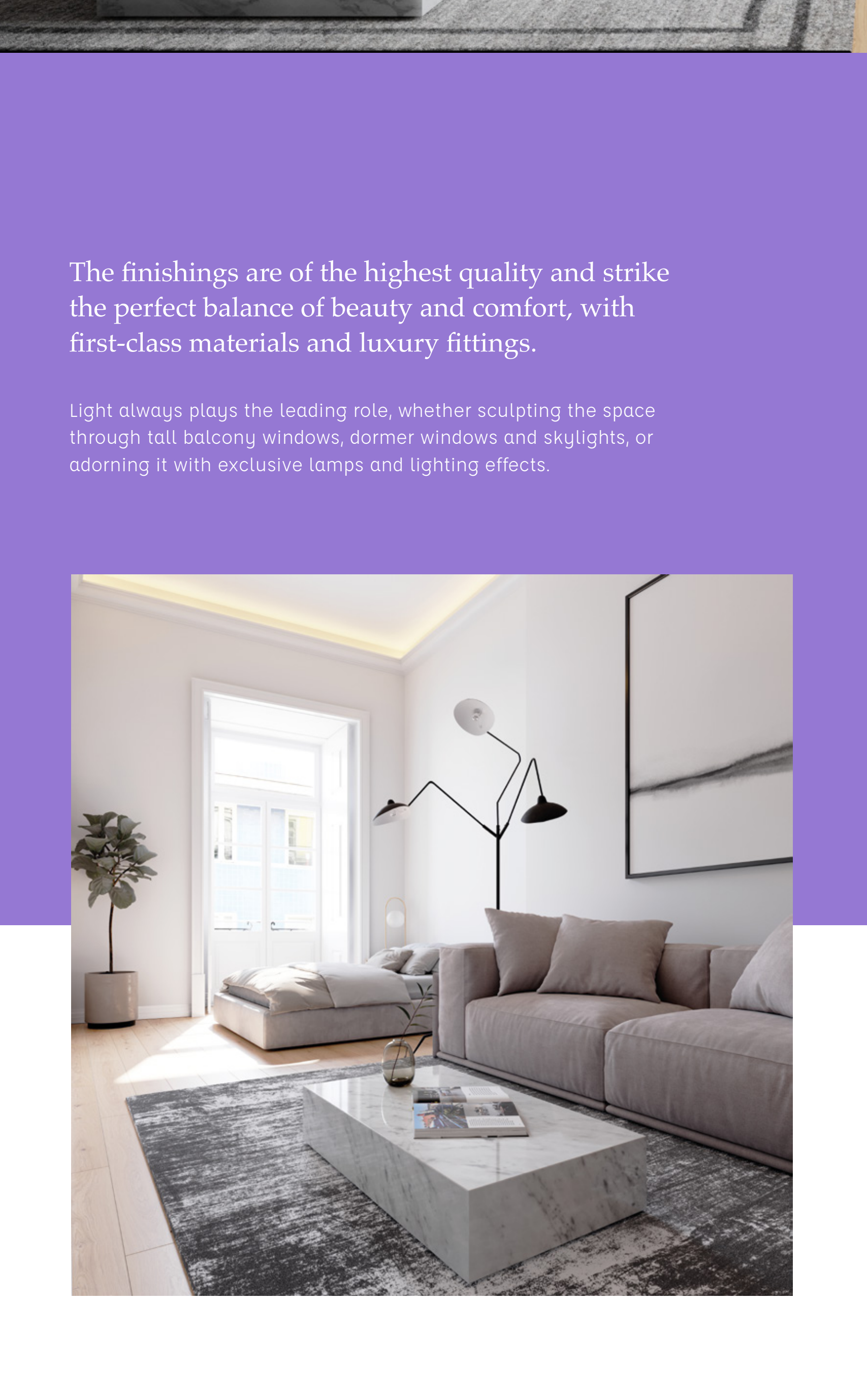
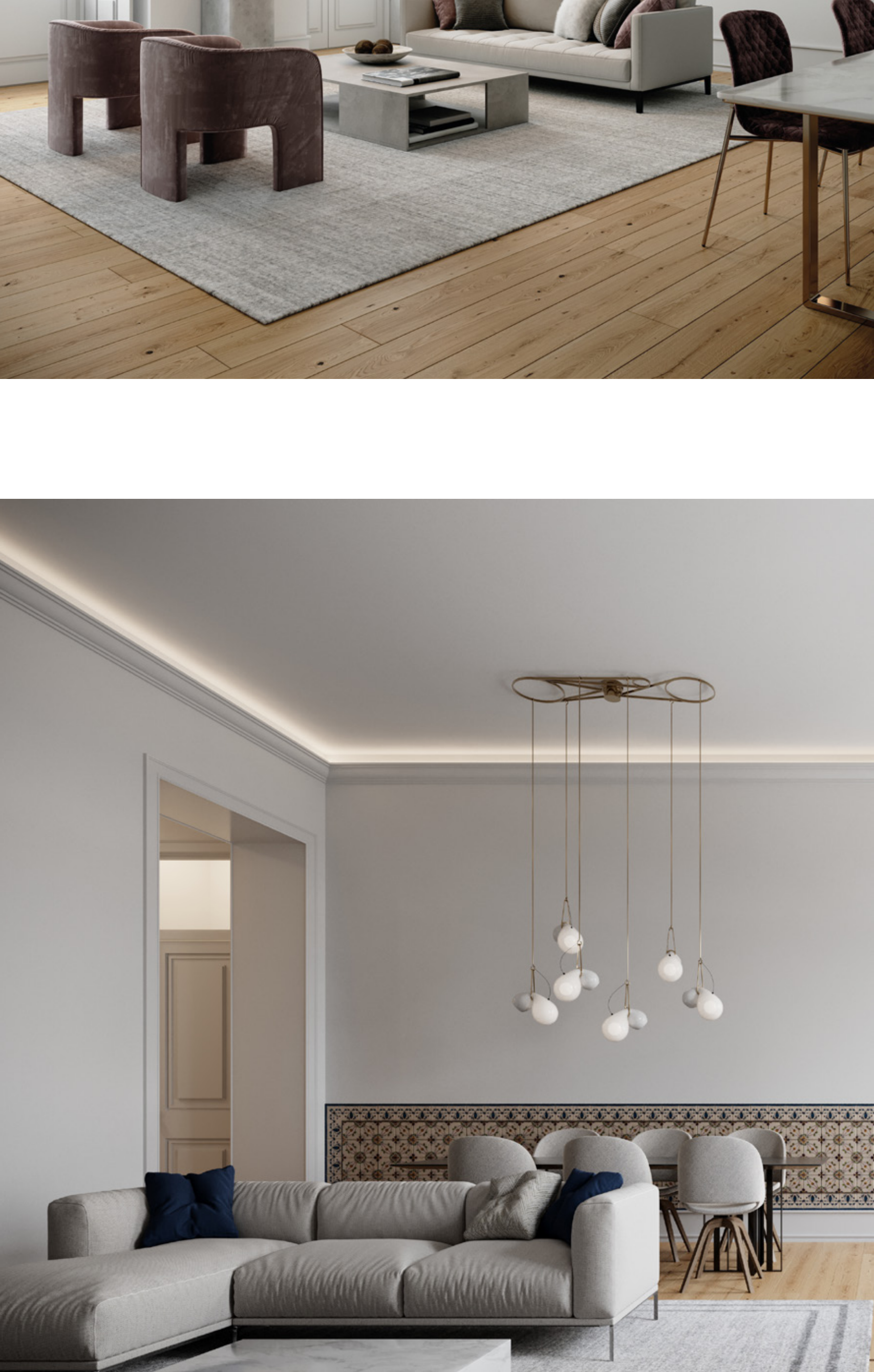
Everything has been carefully thought out to meet the most stringent standards of comfort and style. Full advantage of the exceptionally high ceilings is taken to gain living space with stunning mezzanines.





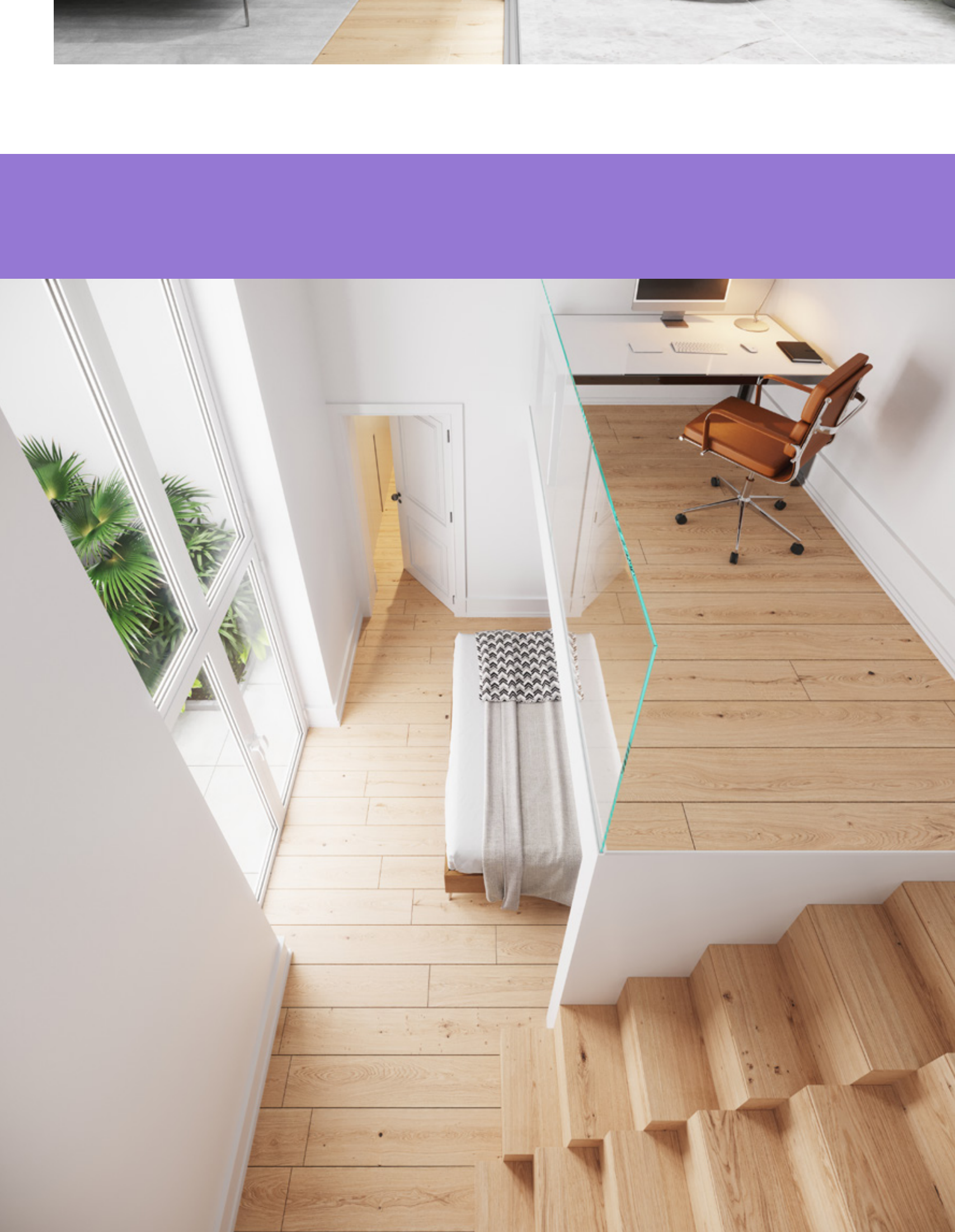
Arches, folding doors, and glasswork distinguish and integrate well-lit environments.

This integration of heritage and innovation, architecture, art and design, has converted a formal example of 18th century Portuguese architecture into a stylish classic that will continue to enchant and inspire for future generations.

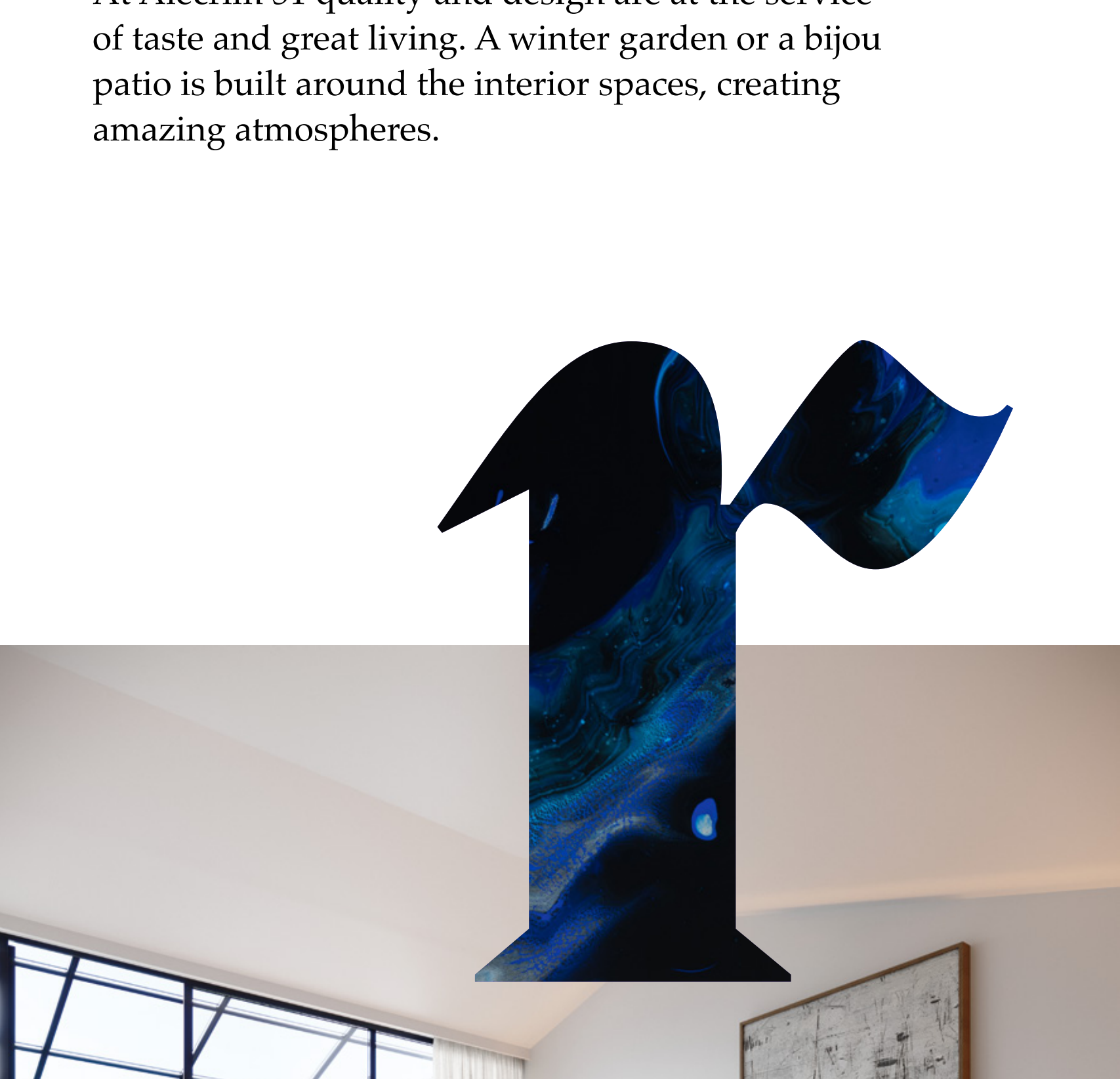


The finishings are of the highest quality and strike the perfect balance of beauty and comfort, with first-class materials and luxury fittings.

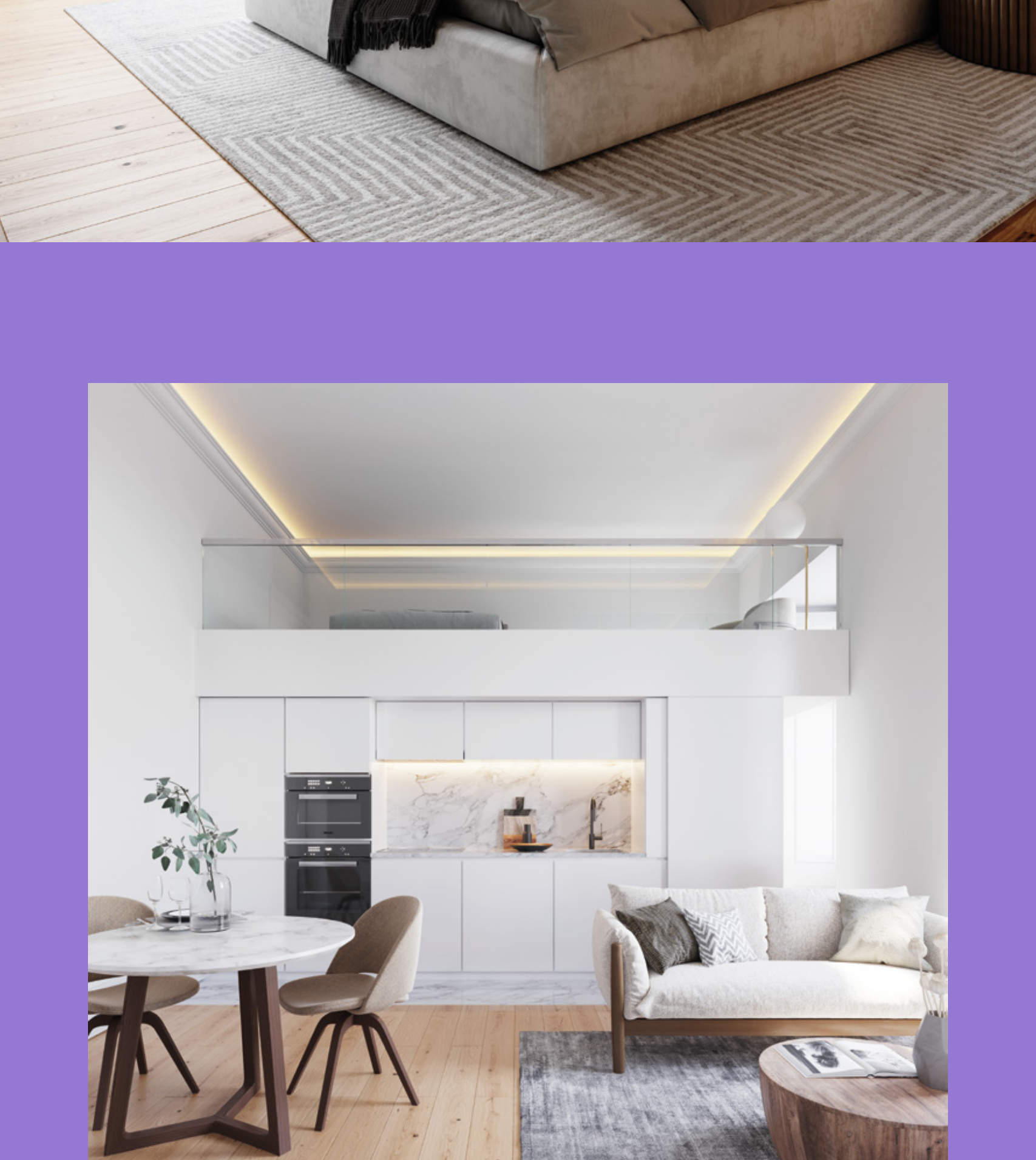
Light always plays the leading role, whether sculpting the space through tall balcony windows, dormer windows and skylights, or adorning it with exclusive lamps and lighting effects.



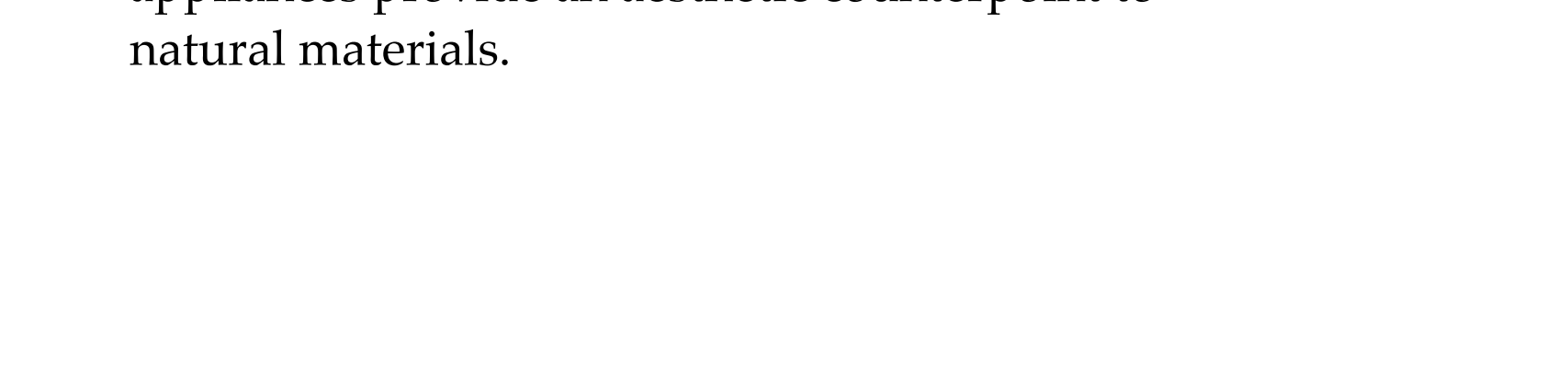
The bedrooms feature a walk-in wardrobe and numerous storage solutions. Wide-plank hardwood floors create warm and welcoming environments.



At Alecrim 51 quality and design are at the service of taste and great living. A winter garden or a bijou patio is built around the interior spaces, creating amazing atmospheres.



The kitchens open out onto sleek living rooms and lend themselves to socialising. State-of-the-art appliances provide an aesthetic counterpoint to natural materials.





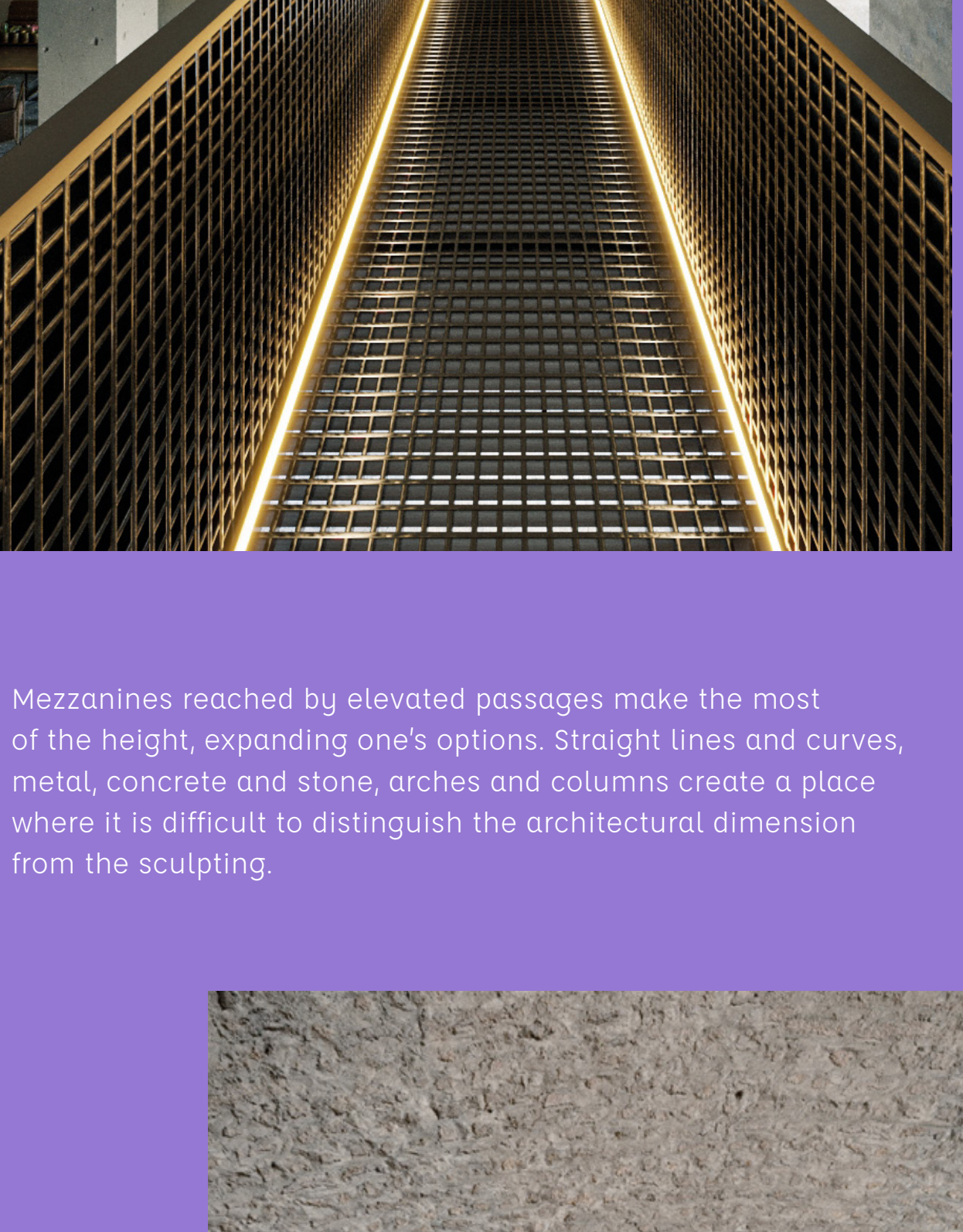
ARCHOS

A private entrance on Rua das Flores leads to a 244sqm ground-floor loft apartment – a warm and inviting world of vaulted ceilings, columns and rounded arches.

ARCHOS is exciting in its eclecticism, an open space capable of evoking and distinguishing an infinite range of environments. It is an urban refuge, both monastic and secular, a contemporary space with an industrial feel inserted into an 18th century building.

A SPACE APART

ARCHOS is versatile and functional, designed to meet all expectations, both as a living space and as a workplace.



Mezzanines reached by elevated passages make the most of the height, expanding one's options. Straight lines and curves, metal, concrete and stone, arches and columns create a place where it is difficult to distinguish the architectural dimension from the sculpting.



A PROJECT WITH A SOUL

The restoration of Alecrim 51 is a display of confidence in our time and a mise-en-scene of the dialogue of new architecture and contemporary artists with the past. It combines the stately 18th-century aspect of the original building with the latest ideals of aesthetics and comfort.

Features that made the property special have been conserved and preserve its legacy and personality, while others that make it singular have been added and broaden our lines of sight and time.

Fragmentos is an architecture studio with extensive experience in bespoke housing and refurbishment projects. Fragmentos' work stands out for the determination and commitment it invests in each challenge.

ARCHITECTS
FRAGMENTOS
DE ARQUITETURA

LIGHTING
SERIP

Hand-crafted unique lamps inspired by organic forms, singular works in an era of mass production: Serip stands for passion in lighting and design.

The work of the Lisbon-based French artist Clara Imbert uses an architectural perspective to take us to other levels. Through a study of the invisible, space becomes deconstructed and new spaces emerge that explore the relationship between reality and fantasy.

SCULPTOR AND INSTALLATION ARTIST
CLARA IMBERT

VIVUM

CURATING HOMES

Praça Príncipe Real 28
3rd Floor
1250-182 Lisbon
contact@viviumproperties.com
+351 912 98 9130

viviumproperties.com



Branding, Design & Editorial Concept: AADB Aleksander Dembinski Caroline Vézian Nuno Patrício aadb.pt

Copywriting Nuno Alves Helen Assaf

3D Pressrender Virtual Mirage Reality

Photographs Tiago Ventura Rami Moughabghab

FLUO Bright Ideas fluo.pt

At Vivium, we believe that homes should be designed to boost well-being and harmony among family members. The way we design spaces, how they communicate with one another and how we integrate daylight and other features, fosters comfort and happiness. We value beauty and attention to detail to create a nuanced reflection of the best that life has to offer.

Each piece adds perspective to and is redefined by the space it inhabits. Every angle and line is finely tuned to artful living. We believe that internal spaces are optimised and value-enhanced if they sit amid astonishing architecture that is treated as a sculpture. We are mindful of each location's own rich culture, architectural and historical background, and we strive to integrate those elements within the communal spaces of the building.

Blazing Reflection

NON CONTRACTUAL DOCUMENT
All elements in this document are indicative only, may change and are not contractual. The developer reserves the right to make changes to the dimensions and equipment freely according to the technical constraints of construction.